





dasso · bamboo



dasso group, founded in 1993, is one of the global leader and innovator of the bamboo industry. After decades of development, dasso now have 4 manufacturing facilities and over 1,000 employees.

dasso has always pursued the advanced crafts, technology and automatic manufacturing equipments, we invited to united the talented people to develop the efficient management system for production and quality control, which enable dasso to provide the bamboo products with superior quality and become powerful integrated solution provider for bamboo products. dasso offers dassoCONTO, dassoTECHNICS, dassoART, and dassoTECH in regular product range.

In addition to conventional products, dasso group cooperates with design institute and developer in order to provide customized products, such as bamboo fire-resistant ceiling of Madrid International Airport, Bamboo structure interior of Wuji Grand Theater, special bamboo elements in Culture and Art Center of Fuzhou Xikou... until now, we have completed more than 1,000 projects in more than 60 countries all over the world.



Hangzhou Dasso Technology Co., Ltd

Multi-purpose production facility produces 500,000 m² per year.



Hangzhou Zhongyi Furniture Co., Ltd

Furnishing Floor 400's 40'x11' container per year.



Fujian Dasso Industry Co., Ltd

dassoART & dassoTECH production facilities produces 2 million m² per year.



Zhejiang Daocheng Bamboo Industry Co., Ltd

An overseas sales team of dasso bamboo products, whose business is around the world with more than 50 agents.



Jiangxi Zhushang Bamboo Industrial Co., Ltd

dassoART production facility produces 1 million m² per year.



Zhuji Gallery

Integrated design, development, sales and production of green bamboo, original design of bamboo crafts.



Zhejiang Xinhaiye Bamboo Technology Co., Ltd

dassoART production facility produces 500,000 m² per year.



Shunchang Zhuji Bamboo Industrial Co., Ltd

Multi-purpose production facility produces 200,000 m² per year.



CONTENT

- Public architecture
- Stadiums and venues
- Theatres
- Museums
- Offices and shopping malls
- Healthcare and education
- Hospitality
- Public spaces
- Residential
- Innovation



Madrid Barajas Airport

Location **Madrid / Spain**

Project completion **2004**

Sub-brand **dassoElements**

Quantity **230,000 M²**

Designed by **Richard G. Rogers of Rogers Stirk**



After 15 years



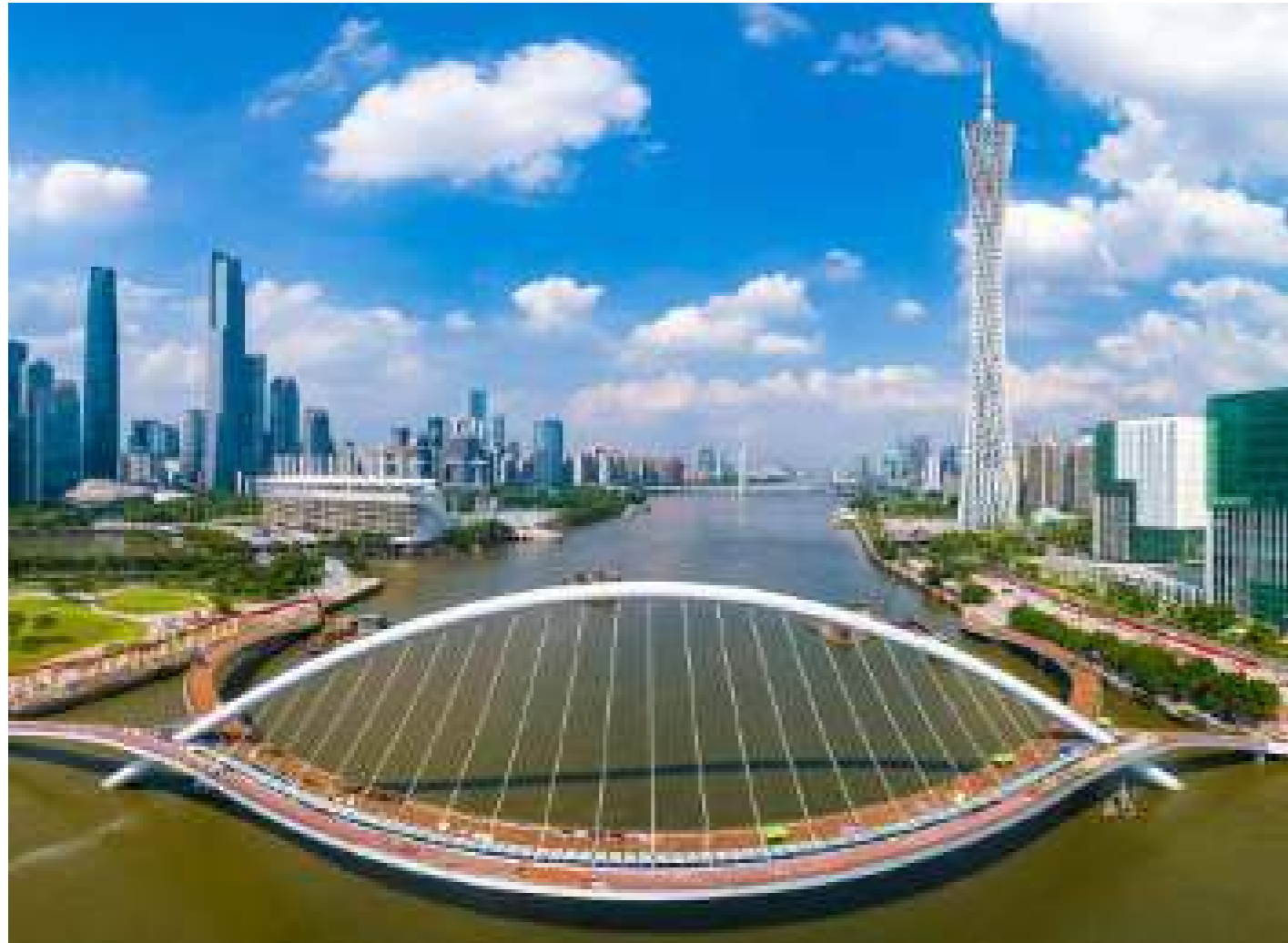
HongKong-Zhuhai-Macao Bridge

Location **China**
project completion **2018**

Sub-brand **dassoXTR**
Quantity **20,000 M²**

Designed by
Hangzhou Landscape Architecture Design Institute





Guangzhou Haixin Pedestrian Bridge

Location **China**
project completion **2021**

Sub-brand **dassoCTECH**
Quantity **5,000 M²**

Designed by
He Jingtang





Boao ASIA Forum International Conference Center

Location **Hainan / China**

Project completion **2017**

Sub-brand **dassoXTR**

Quantity **4,000 M²**

Designed by **SOM & SWA**





Nanjing Youth Olympic Park and Plaza

Location **Jiangsu / China**

Project completion **2014**

Sub-brand **dassoXTR**

Quantity **30,000 M²**

Designed by **Scott Slaney of SWA Group**





Kunshan Garden in the 12th China (Nanning) International Garden Expo

Location **Guangxi / China**
Project completion **2018**

Sub-brand **dassoXTR / Elements**
Quantity **2,000 M²**

Designed by **Cuikai Studio**





Western China International Expo City

Location **Sichuan / China**

Project completion **2016**

Sub-brand **dassoElements**

Quantity **9,600 M²**

Designed by

tvSDesign / CSEEC Southwest Design & Research Institute





Shandong Grand Theatre

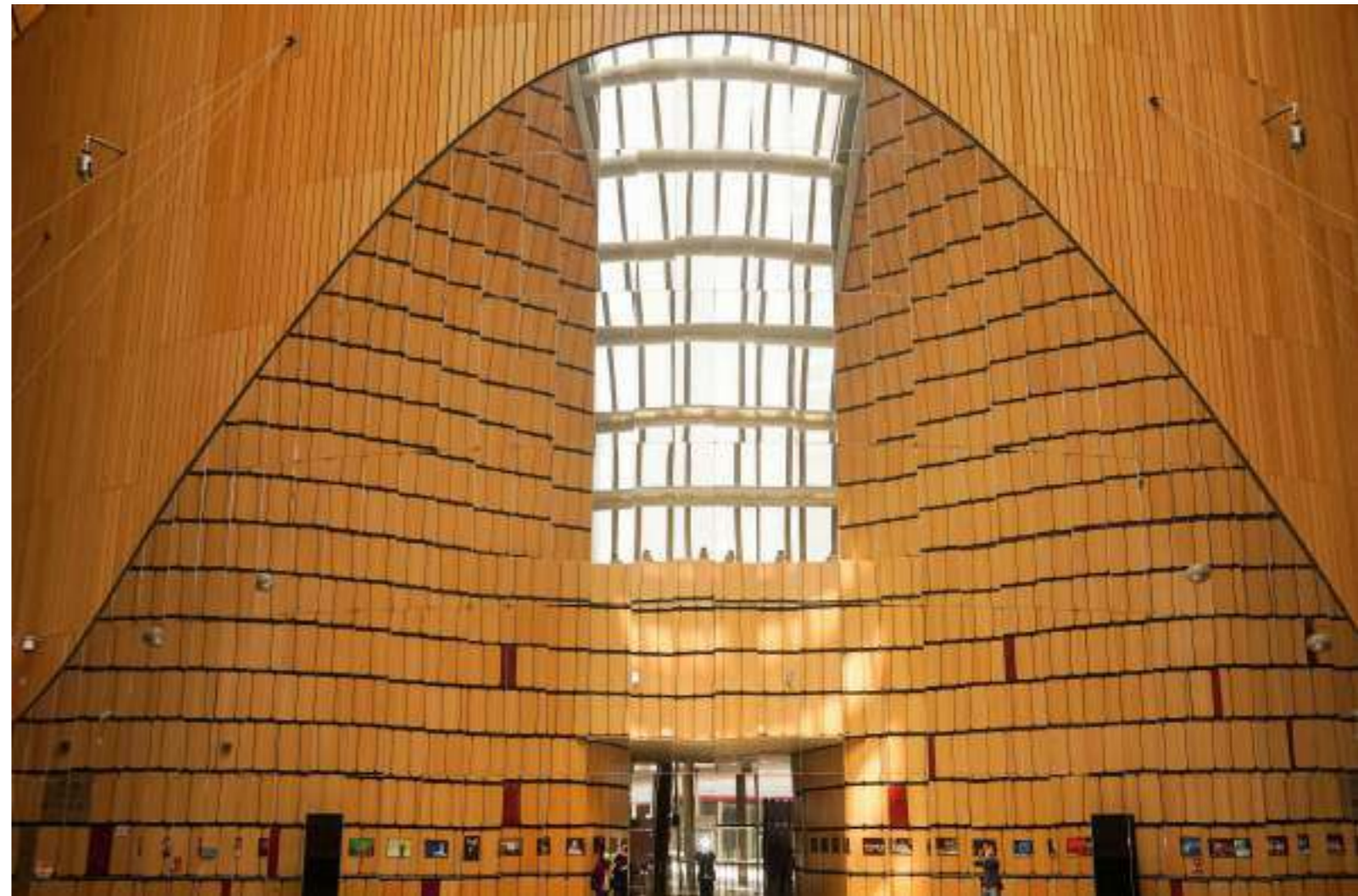
Location **Shandong / China**

Project completion **2012**

Sub-brand **dassoElements**

Quantity **20,000 M²**

Designed by **Paul Andreu Of Paul Andreu
architecte paris**





Fuzhou Strait Culture and Art Centre

Location **Fujian / China**

Project completion **2018**

Sub-brand **dassoElements / Flooring / CTECH**

Quantity **28,700 M²**

Designed by **Pekka Salminen** of **PES-Architects**





Wuxi Grand Theatre

Location **Jiangsu / China**

Project Completion **2009**

Sub-brand **dassoElements / XTR / Flooring**

Quantity **12,000 M²**

Designed by **Pekka Salminen of PES-Architects**





Wuxi Yangshan Geological Museum

Location **Jiangsu / China**

Project completion **2011**

Sub-brand **dassoXTR**

Quantity **1,500 M²**

Designed by **Shanghai boyi architectural**





Gongwang Art Museum

Location **Zhejiang / China**

Project completion **2016**

Sub-brand **dassoElements / XTR**

Quantity **3,000 M²**

Designed by **Wang Shu**





Lin'an Museum

Location **Zhejiang / China**

Project completion **2018**

Sub-brand **dassoElements / XTR**

Quantity **5,000 M²**

Designed by **Wang Shu**





Liquor Museum (TUOPAI)

Location **Sichuan / China**

Project completion **2017**

Sub-brand **dassoXTR**

Quantity **4,500 M²**

Designed by **Atelier FCJZ**





NanXun Urban Planning Exhibition Center

Location **Zhejiang / China**

Project completion **2019**

Sub-brand **dassoXTR / CTECH**

Quantity **3,000 M²**

Designed by **Cuikai Studio**





Wuhan Huashan White Stones Art Gallery

Location **Hubei / China**

Project completion **2021**

Sub-brand **dassoElements**

Quantity **1,200 M²**

Designed by **Shanghai PTArchitects, YU STUDIO**





ONE Lujiazui

Location **Shanghai / China**

Project completion **2008**

Sub-brand **dassoElements**

Quantity **2,000M²**

Designed by **Nikken-Corp / Zheng Yi of Shanghai
Zhongjian Architecture Design Institute Co.,Ltd**





Microsoft (China) Shanghai Technology Park

Location **Shanghai / China**

Project completion **2009**

Sub-brand **dassoElements**

Quantity **1,800 M²**

Designed by **B+H Architects**





Vanke Center Shenzhen

Location **Guangdong / China**

Project completion **2010**

Sub-brand **dassoXTR / Flooring / EElements**

Quantity **21,000 M²**

Designed by **Steven Holl**





Vanke Metropolis in Beijing

Location **Beijing / China**

Project completion **2013**

Sub-brand **dassoXTR**

Quantity **5,000 M²**

Designed by **Neri & Hu**





Vanke Times Center

Location **Beijing / China**

Project completion **2018**

Sub-brand **dassoELEMENTS / dassoCTECH**

Quantity **5200 M²**

Designed by **Vanke**





HEX-SYS in Guangzhou

Location **Guangdong / China**

Project completion **2016**

Sub-brand **dassoFlooring / ELelements**

Quantity **5,200 M²**

Designed by **Hu Li / open Architecture**





Yingjia Club at Vanke

Location **Beijing / China**

Project completion **2011**

Sub-brand **dassoXTR**

Quantity **20,000 M²**

Designed by **Neri & Hu**





Vanke Emerald Park

Location **Chongqing / China**

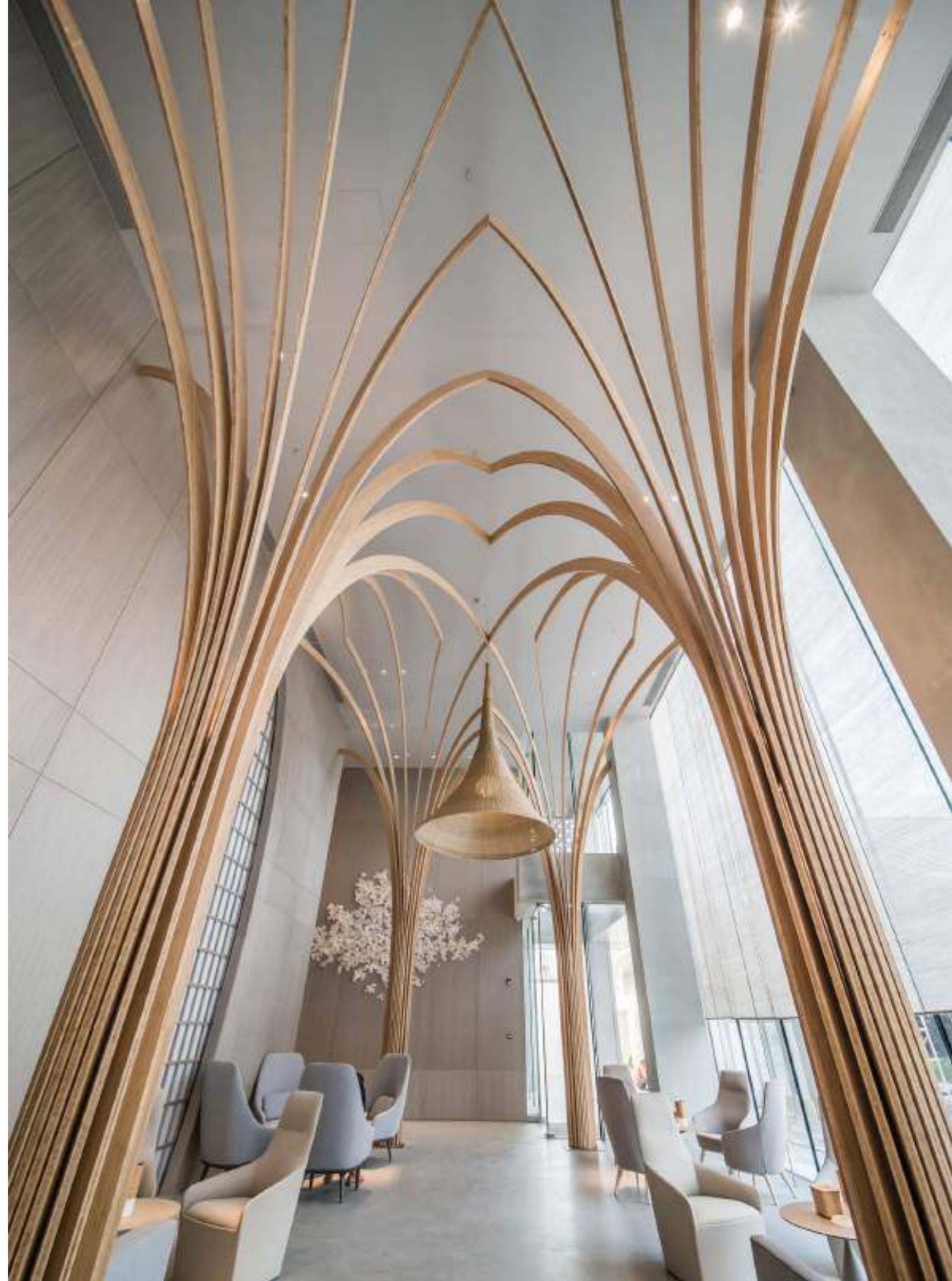
Project completion **2019**

Sub-brand **dassoElements / XTR**

Quantity **600 M²**

Designed by **Lacime Architects / YU STUDIO**

/ Jeff Dayu Shi





Novartis Shanghai Campus Office Building C6

Location **Shanghai / China**

Project completion **2015**

Sub-brand **dassoXTR**

Quantity **15,723 M²**

Designed by **Liu Jiakun** of **Jiakun Architects**





Green Roof Philadelphia

Location **Pennsylvania / USA**

Project completion **2014**

Sub-brand **dassoXTR**

Quantity **450 M²**





Metro Police Nashville Davidson County

Location **Tennessee / USA**

Project completion **2018**

Sub-brand **dassoCTECH**

Quantity **2,300 M²**

Designed by **Hastings Architecture Associates, LLC**





**Spottiwood
(Swimming pool on the rooftop)**

Location **Singapore**

Project completion **2013**

Sub-brand **dassoXTR**

Quantity **3,000 M²**





Fourth & Office

Location **TX / USA**
Project completion **2017**

Sub-brand **dassoXTR**
Quantity **2,300 M²**

Designed by
Rommel Sulit of Forge Craft Architecture
Bart Whatley of Delineate Studio





Office Project In Spain

Location **Madrid / Spain**

Project completion **2021**

Sub-brand **dassoCTECH**

Quantity **1,600 M²**





World Trade Center

Location **Barcelona**

Project completion **2019**

Sub-brand **dassoCTECH**

Quantity **400 M²**





Office Project In Germany

Location **Germany**

Project completion **2021**

Sub-brand **dassoCTECH**





Dongguan Link International Business Park

Location **Guangdong / China**

Project completion **2022**

Sub-brand **dassoCTECH**

Designed by **PleasantHouse Design**



Qujiang Creative Circle

Location **Shanxi / China**

Project completion **2020**

Sub-brand **dassoCTECH**

Designed by **Oval partnership**





Rizhao International Heart hospital

Location **Shandong / China**

Project completion **2018**

Sub-brand **dassoXTR / Elements / Flooring**

Quantity **6,000 M²**

Designed by **MADA s.p.a.m.**





Wenzhou Huizhong School

Location **Wenzhou / China**

Project completion **2021**

Sub-brand **dassoCTECH**

Quantity **16,260 M²**





Qingpu Pinghe School

Location **Shanghai / China**

Project completion **2019**

Sub-brand **dassoElements / CTECH / Flooring**

Quantity **8,900 M²**

Designed by **Hu Li /open Architecture**





Gehua Youth and Cultural Center

Location **Hebei / China**

Project completion **2012**

Sub-brand **dassoXTR**

Quantity **3,000 M²**

Designed by **OPEN Architects**





Tourism College of Zhejiang (Qiandao Lake Campus)

Location **Zhejiang / China**

Project completion **2014**

Sub-brand **dassoXTR**

Quantity **3,000 M²**

Designed by **EGO Design**





National University of Singapore

Location **Singapore**

Project completion **2013**

Sub-brand **dassoElements**

Quantity **13,000 M²**

Designed by **MKPL Architects & sasaki**





Tsingpu Yangzhou Retreat

Location **Jiangsu / China**

Project completion **2017**

Sub-brand **dassoCTECH**

Quantity **1,200 M²**

Designed by **Neri & Hu**





Atlantis Sanya

Location **Hainan / China**

Project completion **2017**

Sub-brand **dassoCTECH**

Quantity **20,000 M²**

Designed by **CCD / CHENG CHUNG DESIGN(HK)**





The Sanya Edition

Location **Hainan / China**

Project completion **2018**

Sub-brand **dassoCTECH**

Quantity **2,980 M²**

Designed by **SWA**





Four Season Ocean Courtyard Hotel

Location **Hainan / China**

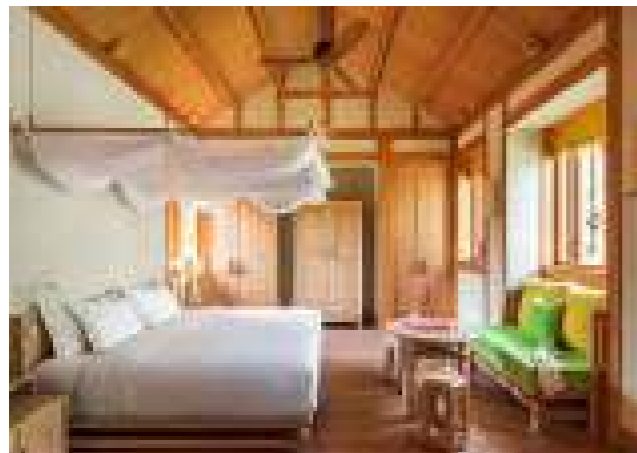
Project completion **2018**

Sub-brand **dassoCTECH / XTR**

Quantity **22,000M²**

Designed by **heibrid architecture / Zhouhua Wen**





Six Senses Qing Cheng

Location Sichuan / China

Project completion 2015

Sub-brand dassoFlooring / Elements

Quantity 7,000 M²

Designed by Six Senses Creative Department





Xi Garden

Location **Hainan / China**

Project completion **2013**

Sub-brand **dassoFlooring**

Quantity **400 M²**

Designed by **Wang Weiguang**





1 Hotels Sanya Haitang Bay

Location **Sanya / China**

Project completion **2020**

Sub-brand **dassoCTECH**

Quantity **12,000 M²**

Designed by **Coopers Hill**





The Trading Post

Location **Thailand**

Project completion **2017**

Sub-brand **dassoXTR**

Quantity **150 M²**





Nikki Beach Club

Location **Koh Samui / Thailand**

Project completion **2021**

Sub-brand **dassoCTECH**

Quantity **750 M²**





The Taikang Sanya

Location **Hainan / China**

Project completion **2022**

Sub-brand **dassoCTECH**

Quantity **4,000 M²**

Designed by **Neri&Hu, Golden Curtain Wall Group Co., Ltd**





Park Hyatt Sanya Sunny Bay Resort

Location **Hainan / China**

Project completion **2022**

Sub-brand **dassoCTECH plus**





Xilai Old Town in Chengdu

Location **Sichuan / China**

Project completion **2011**

Sub-brand **dassoXTR**

Quantity **15,000 M²**

Designed by **JiaKun Liu of JIAKUN ARCHITECT**





Qiandao Lake Pearl Square

Location **Hangzhou / China**

Project completion **2013**

Sub-brand **dassoXTR**

Quantity **20,000 M²**

Designed by **AECOM**





Shenjun Mountain

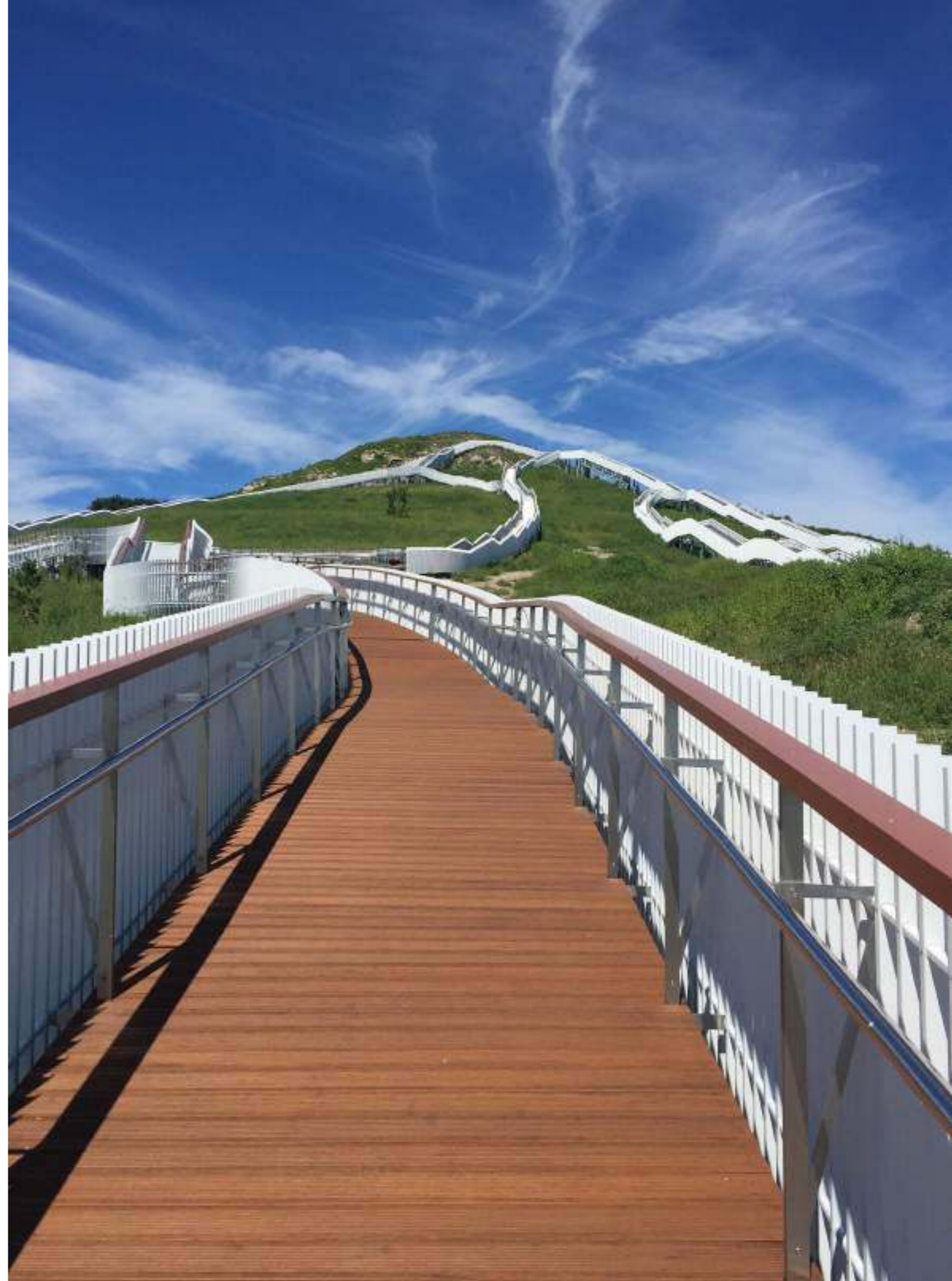
Location **Inner Mongolia / China**

Project completion **2018**

Sub-brand **dassoCTECH**

Quantity **12,000 M²**

Designed by **TuRen Scape**





Changchun Culture of Water Ecology Park

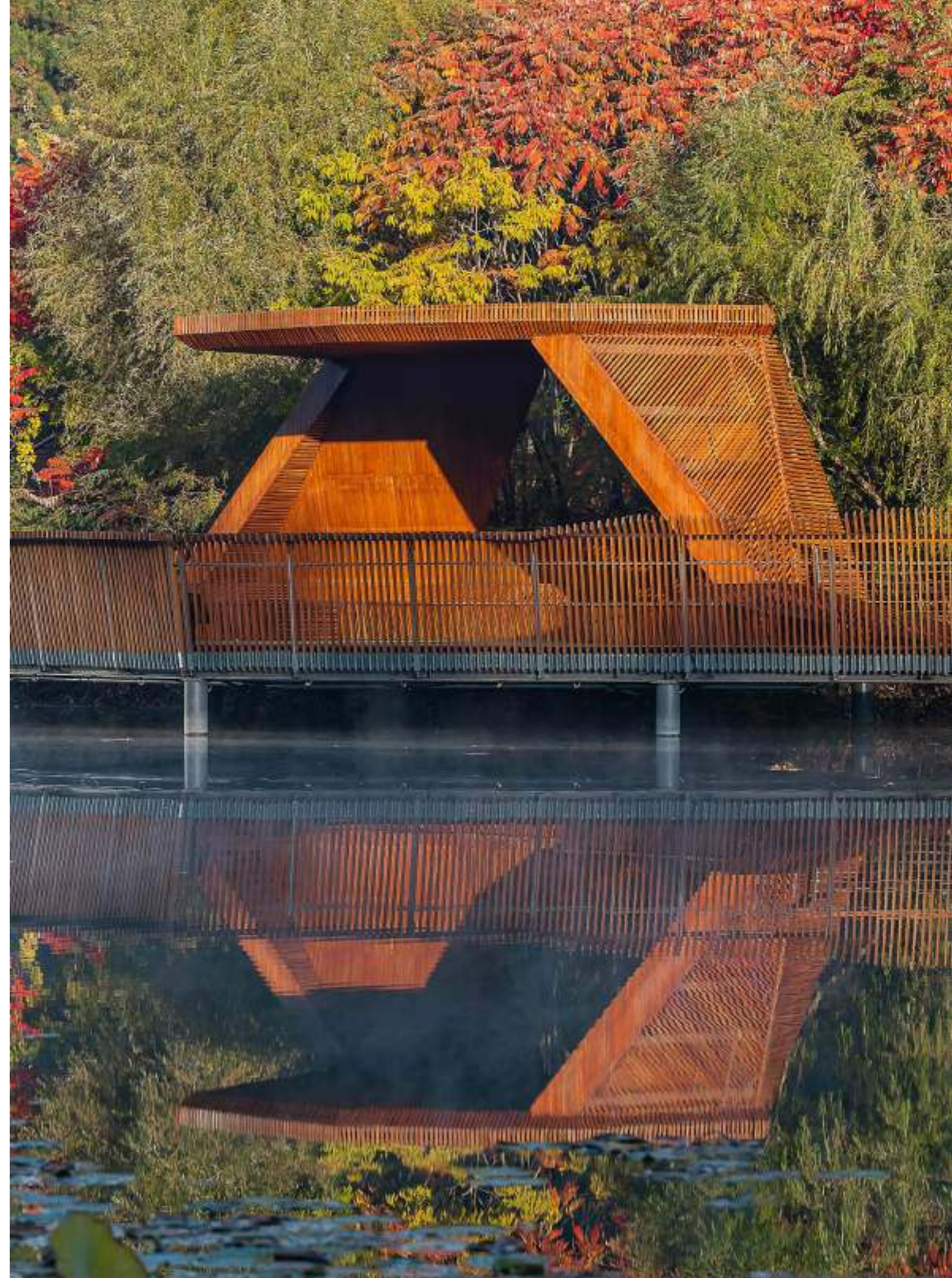
Location **Jilin / China**

Project completion **2018**

Sub-brand **dassoCTECH**

Quantity **20,000 M²**

Designed by **W&R Design**





The Urban Gallery Hyperlane Project

Location **Sichuan / China**

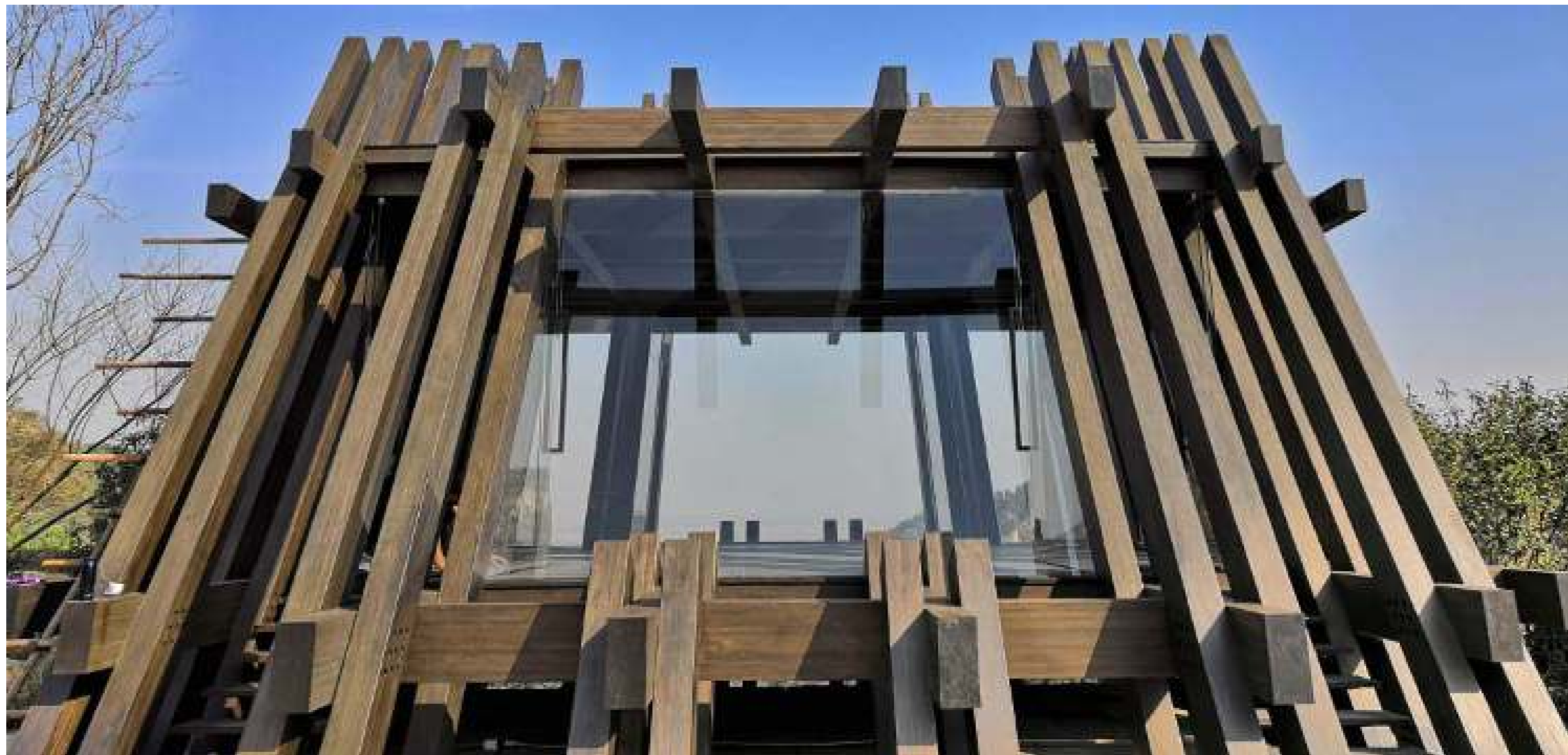
Project completion **2009**

Sub-brand **dassoCTECH**

Quantity **50 M²**

Designed by **ASPECT Studios**





Zhengzhou Xingyang Chess King Pavilion

Location **Zhengzhou / China**

Project completion **2018**

Sub-brand **dassoElements**

Quantity **60 M²**

Designed by **gad Greentown Design**





KPMG-CCTF Community Centre

Location **Sichuan / China**

Project completion **2009**

Sub-brand **dassoXTR**

Quantity **500 M²**

Designed by **The Oval Partnership**





Olmos Park

Location **TX / USA**

Project completion **2018**

Sub-brand **dassoXTR**

Quantity **180 M²**

Designed by **Elizabeth D. Haynes**





Jinan Xiaoqinghe Riverside Reconstruction Trail

Location **Shandong / China**

Project completion **2019**

Sub-brand **dassoCTECH**

Quantity **7,000 M²**

Designed by **Jinan Landscape Architecture Group Design Co.,Ltd**





Yantian 19.5km Waterfront Boardwalk

Location **Guangdong / China**

Project completion **2020**

Sub-brand **dassoXTR**

Quantity **2,000 M²**

Designed by **eLandscape Studio**





Donggang Dapeng Bay Sailing Base

Location **Taiwan / China**
Project completion **2021**

Sub-brand **dassoXTR**
Quantity **800 M²**

Designed by **Phototroph Engineering Consultants, Inc.**



Tongjian Lake in Hangzhou

Location **Zhejiang/ China**
Project completion **2020**

Sub-brand **dassoXTR**
Quantity **5,000 M²**





Private house in Surabaya

Location **Surabaya / Indonesia**

Project completion **2021**

Sub-brand **dassoCTECH**

Quantity **348 M²**





Songhua Lake Ski Resort

Location **Jilin / China**
Project completion **2012**

Sub-brand **dassoXTR**
Quantity **2,000 M²**

Designed by **PlusUrbia (lead) / Brillhart**
Architecture / Gerardo Valle P. Arquitectos





Vanke Beijing Changyang World Business Centre

Location **Beijing / China**
Project completion **2014**

Sub-brand **dassoXTR**
Quantity **3,000 M²**

Designed by **Neri & Hu**





Haleston Row Residence

Location **South Carolina / USA**

Project completion **2016**

Sub-brand **dassoXTR**

Quantity **2,500 M²**

Designed by **Julia Martin of Julia F. Martin Architects**





Valley Hall Deck - Sandy Spring

Location **Atlanta / USA**

Project completion **2019**

Sub-brand **dassoXTR**

Quantity **280 M²**





Merino Crescent

Location **Singapore**

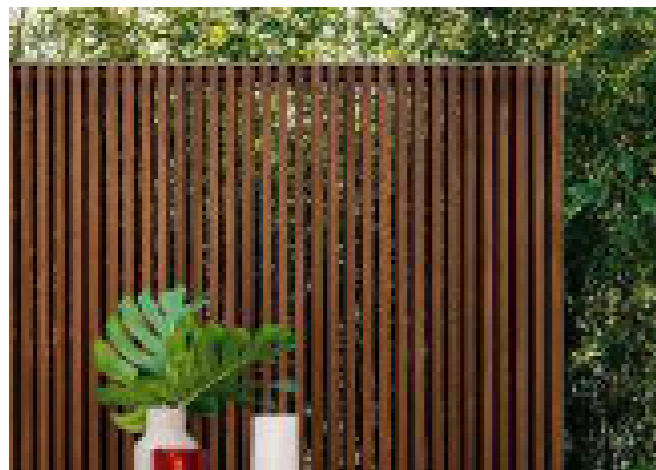
Project completion **2015**

Sub-brand **dassoCTECH**

Quantity **800 M²**

Designed by **HILADT Architects LLP**





Private Villa in Parkistan

Location **Pakistan**
Project completion **2017**

Sub-brand **dassoXTR**
Quantity **120M²**





Private villa

Location **Spain**
Project completion **2021**

Sub-brand **dassoCTECH**
Quantity **90 M²**

Private Villa

Location **Spain**
project completion **2019**

Brand Name **dassoCTECH**
Quantity **186 M²**





Private villa

Location **London**
Project completion **2021**

Sub-brand **dassoCTECH**
Quantity **130.2 M²**

Private villa

Location **Germany**
Project completion **2021**

Sub-brand **dassoXTR**
Quantity **115 M²**





Koosen Tera

Location **Tokyo / Japan**
Project completion **2017**

Sub-brand **dassoXTR**
Quantity **200 M²**

Designed by **abanba**



Fortitude Valley

Location **Australian**
Project completion **2019**

Sub-brand **dassoXTR**
Quantity **220 M²**

Designed by **Peppers**





WeiNan DongYuan JiuChengYue

Designed by **DDON**

Vanke Tianfu Cloud City

Designed by **Aedas**





Tianlu Exhibition Hall - Tianlu Lake

Location **Shanxi / China**

Project completion **2020**

Sub-brand **dassoElements**





Residential house in Australia.

Location **NSW / Australia**

Project completion **2021**

Sub-brand **dassoXTR**

Healtdeva Village

Location **Taiwan / China**

Project completion **2021**

Sub-brand **dassoXTR / dassoCTECH**

Quantity **443 M²**





Private Villa in Lithuania

Location **Lithuania**

Project completion **2021**

Sub-brand **dassoXTR / dassoCTECH**

Quantity **110 m² XTR / 30 m² CTECH**





Private villa in Phnom Penh

Location **Phnom Penh / Cambodia**

Project completion **2022**

Sub-brand **dassoXTR**

Quantity **250 M²**





Urbano Absolute Sathon-Taksin

Location **Bangkok / Thailand**

Project completion **2017**

Sub-brand **dassoXTR**

Quantity **200 M²**





Jindi · Heyue Chunxiao

Location **Zhengzhou / China**

Project completion **2023**

Sub-brand **dassoCTECH**

Designed by **SHUISHI Design**





Apartment in Italy

Location **Trieste / Italy**

Project completion **2022**

Sub-brand **dassoCTECH**

Quantity **200 M²**





BMW X5/X6 Dashboard





Bamboo Wind Turbine Blade

Location **Hebei / China**

Project completion **2008**







dasso China

Add: Tongyi, Linpu, Xiaoshan, Hangzhou, China 311251

Tel: 86.0571.5716.3765

Fax: 86.0571.5716.3700

Email: info@dassogroup.com

Web: www.dassogroup.com

dasso USA

Add: 6060 Boat Rock Blvd, Suite 800, Atlanta, GA 30336

Tel: 1.404.691.6872

Fax: 1.404.691.6870

Email: info@dassousa.com

Web: dassoxt.com

dasso Group Europe

Add: Dionysiusstrasse 173,47798 Krefeld, Germany